



# The Carolina Piedmont Herald

Newsletter of the Carolina Piedmont Division, MER, NMRA

December 2013

## Next Division Meeting

**Tuesday, January 28, 2013**

St. Michael Archangel Centre & Gallery  
830 High House Road  
Cary, North Carolina

**6:30 PM – Board of Directors Meeting**

**7:00 PM – Membership Meeting**

**Popular Vote Contest - \$10 Cash Prize**

Next up - January 28, 2014

Structure or rolling stock with working lights

©2013 Carolina Piedmont Division of the Mid-Eastern  
Region of the NMRA

The Carolina Piedmont Herald is published monthly by the Carolina Piedmont Division, Mid-Eastern Region of the National Model Railroad Association. **Submissions:** Please send news items, inquiries and comments to the Editor of **The Herald by the 15<sup>th</sup> of the month**. All material should be electronic, preferably Microsoft Word or PowerPoint. Pictures should be in jpeg format and in color.

**Jack Dziadul, Clerk and Editor**  
[jackdziadul@gmail.com](mailto:jackdziadul@gmail.com)

919-718-0368 or 919-721-8757 cell

The opinions expressed in this newsletter are those of the author of each article or the Editor of the **Carolina Piedmont Herald** and do not necessarily reflect the official position of the Carolina Piedmont Division.

## Membership Barometer

NMRA Membership	18,836
MER Membership	1,967
Division Membership	132
Division Voting Membership	120
<a href="http://www.trainweb.org/cpd13/">http://www.trainweb.org/cpd13/</a>	
Yahoo Group Members	99
<a href="http://groups.yahoo.com/group/cpd13/">http://groups.yahoo.com/group/cpd13/</a>	
Attendance 12/10/13	26

## January Program

ANNUAL PROTOTYPE QUIZ



Professor John Wallis

## Notice of Annual Meeting

The Annual Meeting of the Carolina Piedmont Division of the Mid-Eastern Region of the National Model Railroad Association will be held on Tuesday, January 28, 2014 at 7:00 PM. The meeting will be held at the St. Michael Archangel Centre & Gallery, 830 High House Road, Cary, North Carolina.

## The Name Game

Please wear your name tag to each meeting. See **Grif Bond** if you need to order one.

## Board of Directors

*Superintendent (term ending January 2014)*

**Grif Bond**, Wake Forest, 919-556-7066  
[grifbond@embarqmail.com](mailto:grifbond@embarqmail.com)

*Assistant Superintendent (term January 2014)*

**Jim Murphy**, Cary, 919-460-7763  
[berkshireshort@yahoo.com](mailto:berkshireshort@yahoo.com)

*Division Clerk (term ending January 2014)*

**Jack Dziadul**, Sanford, 919-721-8757  
[dziadul@windstream.net](mailto:dziadul@windstream.net)

*Division Paymaster (term ending January 2014)*

**Jerry Mersch**, Cary, 919-815-3528  
[jbmswow@nc.rr.com](mailto:jbmswow@nc.rr.com)

*Director (term ending in January 2014)*

**Rob Rousseau**, Holly Springs, 919-368-0586  
[railroad@nc.rr.com](mailto:railroad@nc.rr.com)

*Director (term ending in January 2015)*

**Steve Milley**, Garner, 248-421-6276  
[rsmilley@yahoo.com](mailto:rsmilley@yahoo.com)

*Director (term ending in January 2016)*

**Will Seehorn**, Cary, 919-466-0827  
[wseehorn@gmail.com](mailto:wseehorn@gmail.com)

## **CPD Meeting Calendar**

Tuesday night's monthly 2013  
 6:30 PM Board / 7:00 PM General Meeting

### **2014**

<b>January 28</b>	February 25	March 25
April 22	May 27	June 23
July 22	August 26	September 23
October 28	November 11	December 9




## **Coming Events**

Carolina Southern's Railroad Model University  
 Charlotte, NC  
 January 24, 2014  
<http://www.carolinasouthern.org/>

Amherst Model RR Society Train Show  
 West Springfield, MA  
 January 25-26, 2014  
<http://www.railroadhobbyshow.com/>

Streamliners at Spencer  
 NC Transportation Museum  
 411 South Salisbury Avenue, Spencer, NC  
 May 29-June 1, 2014  
<http://www.nctrains.org>

### **NMRA National Conventions**

2014	7/13 - 7/20		Cleveland, OH
2015	8/23 - 8/30		Portland, OR
2016	7/3 - 7/10		Indianapolis, IN
2017	July		Orlando, FL

### **MER Convention Host Calendar**

2014	October 16-19	Hub City 2014 Hagerstown, MD	watch for details at <a href="http://www.smdnmra.org">http://www.smdnmra.org</a>
2015	October Dates TBD		
2016	October Dates TBD	Raleigh, NC	

*Editor's note - Before traveling any distance to an event listed, it is recommended you verify the event is still scheduled by checking the event's web site or calling the local contact.*

## **Stay in Touch**

Address, email or telephone changed? Here is the link to keep your NMRA records up to date.  
<http://www.nmra.org/member/content/member-info-update>

## Yahoo!

### Jack Dziadul

Ladies and Gentlemen, we have 99 Yahoo Group followers. Who will ring the bell as our 100<sup>th</sup> member? You could be the Star of The Day!

## Program Topics

January



Proto Quiz – John Wallis

February



Signs on Buildings

Jim Murphy

March



Scratch or kitbash

Steel freight cars- Fenton Wells

April



Painting Backdrops

Iris Nazario-Dziadul

May



Interlocking Towers

Jack Dziadul

June



Cardstock Structures

Grif Bond

July



Passenger Car Lighting

Mark Blaustein

## Refreshment Hosts

January

**Vic Bitleris**

February

Gene Sing

March

**your name goes here**

## Monthly Contests

January

Working Lights in  
Structure or Rolling Stock

February

Winter Scene

March

Signs on Buildings

April

Scratch or kitbashed  
freight car

May

Backdrop

June

Interlocking Towers

July

Cardstock construction

August

Lighted Passenger Car

## Welcome New Members

Erik Dyke

Raleigh

AJ Green

Cary

Joseph Pastusek

Spring Lake

Everett Poore

Raleigh

Doug Tomlinson

Cary

Vincent Whiteley

Ft. Bragg

## NMRA web sites

NMRA <http://www.nmra.org/>

NMRA eBay <http://goo.gl/BVTIY>

MER <http://mer.nmra.org/>

MER mailbag

<http://groups.yahoo.com/group/MERMailbag/>

CPD <http://www.trainweb.org/cpd13/>

CPD <https://www.facebook.com/cpd13>

## Service to the Hobby

**Jack Dziadul**

### Carolina Piedmont Division

There are numerous ways to give back to the modeling community. One important way is to run for elective office. In January CPD will have its annual election. The officer positions of Superintendent, Assistant Superintendent, Clerk and Paymaster as well as one Director slot will be on the ballot. Please contact Nominating Committee members **Will Seehorn**, **Jim Babcock** or **Don Jennings** if you are interested in serving. So far, **Grif Bond** and **Jim Murphy** have expressed interest in running for another term as Superintendent and Assistant Superintendent, respectively; **Bob Bridges** has expressed interest in the Clerk / Editor position, **Gene Sing** is interested in the Paymaster position and we have three candidates for Director: **Dan Fisher**, **Bill Hanley** and **Stephen Wood, MMR**.

### Mid-Eastern Region

In 2014 the Officer positions of President, Vice President, Secretary and Treasurer will be up for election. President **John Janosko**, VP PJ Mattson, MMR and Secretary Mike White will be "termed out" and will not be eligible for reelection to the same office. So, here is an excellent opportunity to run for an open seat.

## Classifieds

**ATTENTION CPD MEMBERS:** Do you have a wanted or an item for sale? Are you looking for carpool options to our meetings, a train show event or options for sharing a hotel room? The Herald will publish a FREE classified section for all CPD members. Send your classified ad to the Editor at [dziadul@windstream.net](mailto:dziadul@windstream.net). The ad must include your full name and contact information and will be limited to one item per issue.

## FINANCIAL REPORT

**Jerry Mersch, Paymaster**

### October 2013 (Revised)

Balance In Check Book 9/30/13	\$6,994.71
<u>Income</u>	
Total	\$ 0.00
<u>Expenses</u>	
Bank Fee	\$ 3.00
Division Banner	\$247.00
NRV Table Rental	\$124.50
Popular vote award	<u>\$ 10.00</u>
Total	\$384.50
Check Book Balance 10/31/13	\$6,610.21

### November 2013

Balance In Check Book 10/31/13	\$6,610.21
<u>Income</u>	
Raffle Proceeds	\$1,104.00
Donation	\$ 10.00
MER/NMRA Reimbursement	<u>\$ 61.50</u>
Total	\$1,175.50
<u>Expenses</u>	
Raffle Layout Supplies	\$ 140.00
October Meeting Refreshments	\$ 23.65
AP Supplies	\$ 22.05
Popular vote award	<u>\$ 10.00</u>
Total	\$ 195.70
Check Book Balance 10/31/13	\$7,590.01

# **CPD: Where We Live**

**Jack Dziadul, Clerk**

CPD Demographics			
County	Members	City	Members
Chatham	2	Angier	1
Cumberland	23	Apex	4
Durham	10	Cameron	1
Franklin	2	Cary	20
Harnett	2	Chapel Hill	7
Hoke	1	Clayton	5
Johnston	6	Durham	9
Lee	3	Fayetteville	16
Moore	5	Fuquay-Varina	2
Nash	3	Garner	1
Orange	11	Hillsborough	4
Robeson	1	Holly Springs	2
Wake	62	Hope Mills	3
Wilson	1	Louisburg	1
		Morrisville	1
		Nashville	1
		Pembroke	1
		Pinehurst	2
		Pittsboro	2
		Princeton	1
		Raeford	1
		Raleigh	23
		Rocky Mount	2
		Rolesville	1
		Rougemont	1
		Sanford	3
		Southern Pines	3
		Spring Lake	1
		Stedman	3
		Wake Forest	6
		Wendell	1
		Willow Spring	1
		Wilson	1
		Youngsville	1
<b>Total</b>	<b>132</b>	<b>Total</b>	<b>132</b>



# **Meeting Minutes**

**Jack Dziadul, Clerk**

## **Carolina Piedmont Division 13**

**December 10, 2013**

**Board of Directors**

Attendance: **Steve Milley, Jerry Mersch, Jack Dziadul, Jim Murphy, Grif Bond, Will Seehorn**

Call to order 6:32 PM

1. October and November minutes were reviewed and approved. Steve Milley motion with Will Seehorn second.
2. Paymaster's report & Year-to-date budget review approved on Steve Milley motion and Will Seehorn second.
3. Grif Bond requested that Board members submit recommendation for Member of the Year award directly to him.
4. Steve Milley gave the Holiday Trains for Kids report. There are 14 train sets with 5 committed and 9 still available.
5. Will Seehorn gave the Nominating Committee status update. Superintendent Bond and Assistant Superintendent Murphy will be running for reelection. Gene Sign has expressed an interest in Paymaster and Bob Bridges expressed an interest in Clerk. There were no Director candidates at this point.
6. The 2014 budget will be addressed at the February meeting.
7. Jack Dziadul requested that Officers, Directors and Committee Chairman submit 2013 reports for publication in the January Herald.
8. Other Business:
  - a. Continuing the Contest Participation Award was discussed.

- b. The 2016 MER convention contract was discussed. MER Director Jack Dziadul will be discussed the MER overhead and ad fees with the MER Board in January.

6. Board adjourned at 6:550 PM

## **Business meeting**

Call to order – 7:00 PM  
Attendance 26 members

Grif Bond reviewed the Board of Directors meeting.

The Annual Meeting will be held on January 28, 2014.

Holiday Trains for Kids – Steve Milley reviewed the train set availability and requested that interested members contact either Steve or Grif Bond to arrange pick up.

Jack Dziadul reviewed what will be some minor By-Law changes to be considered at the January Annual Meeting.

Grif Bond introduced family members Kim and Molly, who once again did an excellent job of decorating tables and setting the buffet tables up for the traditional holiday refreshments. After the meal, Jack Dziadul reviewed the rules for the Yankee Swap program. John Wallis worked with Jack in tracking the “steals” and kept the gift game moving right along for lots of laughs.

## **Proposed By-Law Changes**

**Jack Dziadul, Clerk**

Jerry Mersch and Jack Dziadul reviewed the By-Laws to determine if any need revision. The following items were reviewed with the Board of Directors and the general membership in attendance at the November meeting.

1.2 Status. Paragraph 3, 1<sup>st</sup> sentence.

*No part of the net earnings of the Division shall inure to the benefit of, or be distributable to its members, trustees, officers, board members or other private persons, except that the Division shall be authorized and empowered to pay reasonable compensation for services rendered and to make payments and distributions in furtherance of the purposes set forth hereafter, including nominal cash or prize awards related to contest participation.*

The above change is recommended to recognize that there may be nominal prizes awarded to membership for recognition of popular vote contest results, contest participation, Superintendent’s Member of the Year award or other such nominal prizes as determined by the Board of Directors. This change is also in keeping with the spirit of Section 1.4 Purpose, which in part reads “4. To sponsor model railroad conventions, meets, clinics, and contests.”

# Clinics at the 2013 Peachtree Express NMRA National Convention

By **Grif Bond**, Superintendent

Here is another short article on a few of the clinics that I attended at the 2013 NMRA National Convention in Atlanta.

## **Bruce Smith**

Bruce F. Smith presented two clinics on military transportation by rail. One clinic primarily covered World War II military loads. He explained how units moved equipment in the early part of the war to protect the coastlines of the United States at the start of World War II. Later train movements evolved into transportation between depots, moving equipment for training and movement of specialized units (e.g. engineering). A second clinic covered troop trains from WWII to Vietnam. With both clinics he shared prototype information along with numerous models that he built.

Bruce provided references for historical information along with sources of models, decals, paints, etc. Here are examples of his modeling talents.





**Bob Miller**

Clinician Bob Miller provided details on how to model "Southern" scenery in HO scale, particularly Florida. Many of his techniques would work for coastal regions from Texas across to Florida and up to North Carolina.

He demonstrated his techniques for modeling orange groves, cypress trees, cypress knees, swamp water, creeks, marsh grass and even HO scale watermelons.



Bob explained how he built the various scenic elements for a fish camp diorama.



Bob's work was also detailed in an article in The May 1991 issue of *Model Railroader*.





Cypress trees (HO scale) are rough cut on a band saw from 2 by 2 inch stock and hand carved to the desired size. Various dried weed roots are used for branches. Spanish moss is created with fine steel wool with a shot of clear coat.



Bob shared his "work in progress" on some HO scale fishing boats and shrimp boats.

### Jim Gore

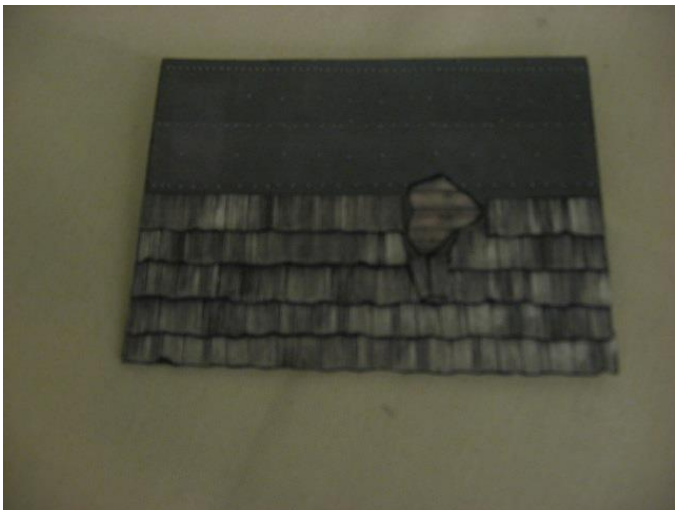
Jim Gore provided an interesting clinic on modeling cardstock structures. Most of his creations were in O scale using Clever Models kits (now on CDs or downloads) and some kit bashing. The following are some examples of his great work. Yes, all built from cardstock and they were fantastic models.





O scale model on the left above and HO scale on the right. I attended the second of Jim's clinics on the topic and he indicated he did not need the HO scale structure, so he offered it to someone in the front row and I was lucky to be able to take it home.





Here is an example of Jim's "layering" of different levels of cardstock representing roof sheathing, tar paper with nails and wood shake shingles. This allows the modeler to create a distressed look by eliminating a layer or two.





Printed cardstock is "fixed" or sealed with a matte spray prior to construction and a quick seal after construction is added to preserve the printed finish. Cardstock edges along the base where the scenery is applied are coated with Chap Stick to prevent wicking of water based glues.

Building a cardstock structure is on my list. Visit [www.clevermodels.net](http://www.clevermodels.net) for a list of their available CDs and downloads along with construction tips. Clever Models also offers several "freebies" to try your modeling skills.

## Rail Pass By The Numbers

Jack Dziadul, Clerk

In 2012 Business Manager Fred Miller, MMR reported that 31% of Rail Pass memberships were renewed as full memberships. In October at this year's MER convention Business Manager Bob Price reported a 29% conversion rate. Both conversion rates were considered excellent.

## From the Business Car

Grif Bond, Superintendent

**Holiday Trains for Kids** – As I write this, it appears the Division will distribute 11 HO scale electric train sets this year for the Holiday Trains for Kids (HTFK) program. Thanks to all the Division members who identified a child in need who would enjoy a model train set. Thanks to Director **Steve Milley** who serves as the HTFK Coordinator for his coordination efforts. The program continues to be successful due to the proceeds generated from the raffle layout sales. Everyone who participated in the raffle layout construction and the raffle ticket sales at the NRV show are also do a "thank you". The children who receive the train sets benefit from your efforts.

**January 2014 Annual Meeting** – The annual Division meeting will be January 28, 2014. Business items include the election of all the officers – Superintendent, Assistant Superintendent, Paymaster and Clerk for 2 year terms and a new Director for a 3 year term, plus voting on a proposed by-laws amendments.

**2014 meeting location** – For 2014 we will continue to meet at the St. Michael Archangel Centre & Gallery, 830 High House Road, Cary. Thanks to Paymaster **Jerry Mersch** for arranging our meeting space for 2014.

***Merry Christmas and Happy New Year to all***

## **InfoNet-News For December, 2013**

Tom Draper – Director – Support Services

### **NMRA ECONOMICS – PART 1 - A VERY BRIEF INTRODUCTION**

This provides a very broad perspective of NMRA economics. Subsequent articles will provide more detail on individual elements and explain how we fund the various parts of our organization. We have committed to place the annual audit results and budgets on the website once it is redesigned. The IT department is busy with other higher priority work and this project is a bit down the list.

The NMRA is not a club but is a non-profit corporation, must conduct its business in strict accord with laws and regulations, and must have an annual outside professional audit (We pass with no major issues.). Like many corporations, we have multiple “business” units (four) and each plays a role in our overall financial strategy. Each of the four units serves a specific purpose and we manage them accordingly. The four units are Operations, NMRA Magazine, Non-Dues Programs, and Howell Day Museum (HDM). The first three are interdependent while HDM is treated as an independent financial unit, but still a part of the NMRA. The overall strategy is that the first three units balance each other every year. We do plan for a small surplus in each annual budget to cover unexpected opportunities or expenses during the year.

Within each unit, there are income and expense streams that are budgeted, tracked, and monitored. The challenge is to balance the first three against [today's](#) mix of member services, while finding ways to increase net revenue so that improvements and/or new services and benefits can be provided. We can also choose to redistribute our resources to change the mix of

member benefits. As an example, in 2013 the BOD chose to increase the budgets for IT and Marketing so that we could increase our reach and communication to members and non-members over the next few years. The website is being redesigned and responsibility for some content is moving to the Department Heads. The increased Marketing effort includes membership applications in all mail orders from several major suppliers, distribution of materials at railroad museums, and a trial of the Build a Memory initiative.

The total annual NMRA budget varies, but is about \$2.3 million in 2013. This may seem like a lot but remember that it includes the annual convention, the National Train Show, and a major fund raising effort by HDM in 2013. Each area has its own budget which is reviewed by a Department Manager, the Finance Committee, and then approved by the Board of Directors on an annual basis. Each fiscal year starts with a zero budget and we build it based on the funds needed to deliver the agreed and planned programs. The chart below shows how the 2013 budget was distributed between the four units.

#### **NMRA 2013 BUDGET (\$ Thousands)**

	<u>Income</u>	<u>Expense</u>
Operations	\$ 668	\$ 720
Magazine	\$ 352	\$ 441
Non-Dues Activities	\$ 871	\$ 673
Howell Day Museum	\$ 458	\$ 456
Total	\$2,349	\$2,290

This has been a very brief introduction. Over the next year, I'll expand on each of the four areas and provide an introduction to the various types of assets and liabilities that make up the NMRA. If you have any questions or thoughts, my contact information is in the Magazine and on the website.

Frank J. Koch, NMRA CFO

# **Neuse River 2013**

Jack Dziadul

Aside from selling raffle tickets and working the Carolina Piedmont tables and layouts, other CPD members were at the Neuse River Train Show selling their wares, operating club layouts and otherwise promoting model railroading. Here are some of the other Stars of Neuse River.



CSX modeler and historian Bruce Faulkner



MER Boy Scout Coordinator Don Jennings



N-scaler and expert modeler Dave Derway



Steel industry expert and traction fan Dick Buchan



N-scaler and Amtrak Ambassador Joel  
McCurry



N-scaler and technology wizard John Wallis

## **Video Collection Donation**

**Jack Dziadul**

Sanford photographer and train friend Richard Hayes donated 73 train videos to CPD. Russ Austin, Bob Bridges and MER Vice President PJ Mattson all graciously offered to undertake a DVD conversion project. Is there a library in our future?

## **Save the Date for Spencer**

**Jack Dziadul**

We are reaching out to MER members to see if there is sufficient interest in having a NMRA Day at the NC Transportation Museum. Saturday, May 31, 2014 is one of the days where the museum has a special first generation diesel roster event. So far, ten operating E and F units will be on display that weekend. Check the web site [nctrans.org](http://nctrans.org) for details. If there are sufficient numbers we will likely be able to arrange for discounted tickets. If you are interested please contact me directly at [JackDziadul@gmail.com](mailto:JackDziadul@gmail.com).