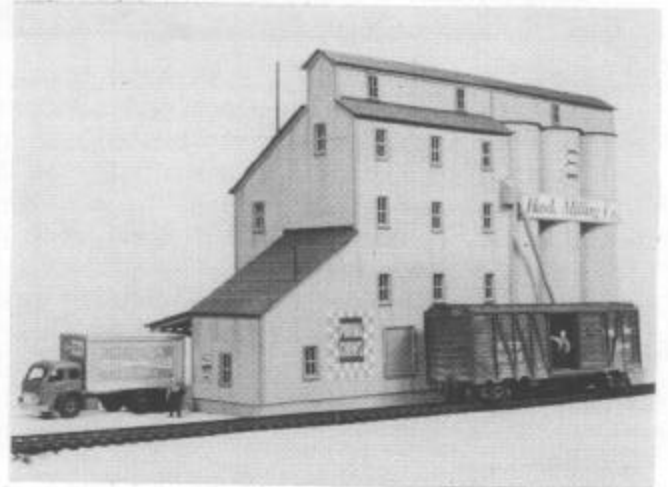
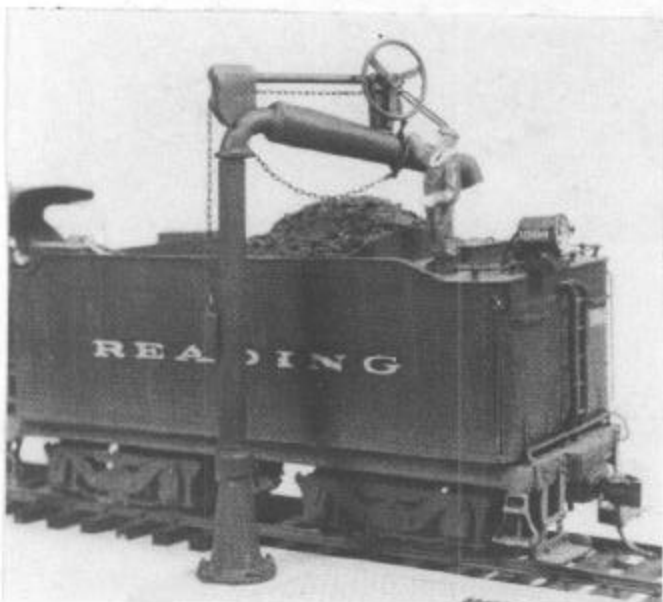


LVM9 - HEAVY DUTY TRACK BUMPER - This is very easy to assemble due to the use of only three castings and separate Northeastern basswood (concrete) base and tie to add for 1/8" track height. This allows adjustment to any track level by simply using the proper base and tie thickness. Painting and assembly instructions are included. There are three bumpers to one kit.



LVM10 - HAWK MILLING CO. - Unlike the towering grain storage silos typical of the midwest, this building can be found along almost any siding in a small town or village, or on the outskirts of a large metropolis. The prototype received various grains by boxcar or covered hopper which was stored in the silos and processed to mixes for use on the farm or in homes which was packaged and hauled away by truck or boxcar.

Model takes a space 5 1/2" x 17". A sheet of colorful printed signs comes with this kit. Most of the parts are precut to size for easy assembly. There are 31 window, two door, and two large loading door castings supplied. Give those airflow hoppers and your boxcars a destination to be assigned to.



SEE  
SEPARATE  
SHEET  
FOR  
PRICES

LVM11 - WATER COLUMN - This is a model of the U.S. Telescopic Water Column made up of three pewter castings....a spout and its support, the valve shut off wheel, and a base. When assembled, these are mounted on a brick and cement foundation containing a drainage and grating. The spout can be swiveled out over a locomotive tender. Easy to construct.