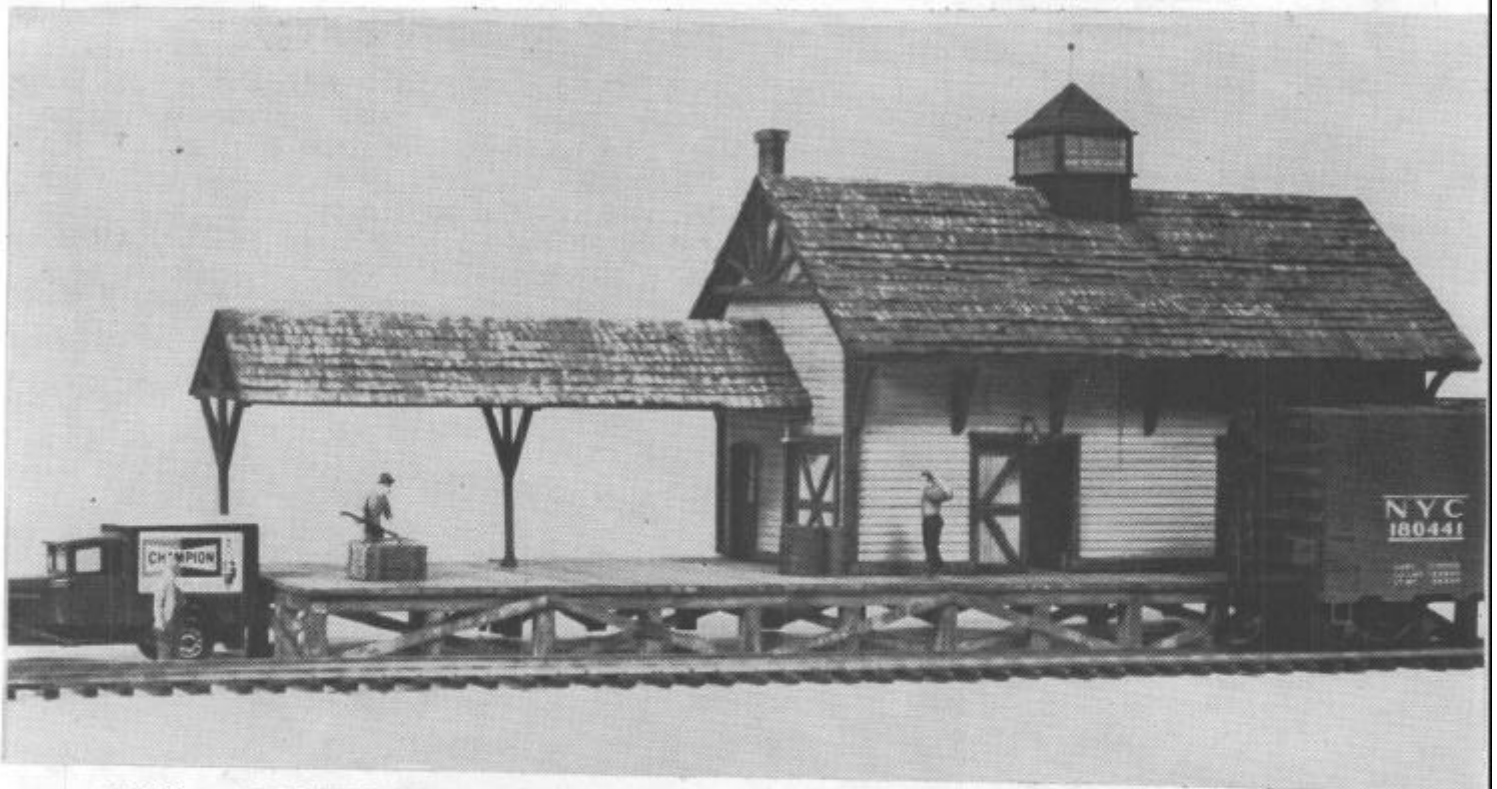


LVMI7 - J.HARRY JONES COAL COMPANY - A duplicate of a real Allentown coal dealer's facility with changes made for compression and convenience. Metal window and door castings are used in the attached office building. Signs are furnished or you can substitute your own. A wealth of drawings and step by step instructions make this easy to assemble. Takes an area 6 1/2" x 12".



LVMI8 - FREIGHTHOUSE - Even after the days of steam there wasn't a town or city that did not have a freight house along its railroad tracks. Your piano, carpet bicycle, or Sears Roebuck order usually had to be picked up at the freight house. There was no UPS delivery. This model occupies an area 5" x 14". Cast double hung windows, doorway, and roof supports make it easy to assemble. It has a shingle roof and a large platform. The platform roof and roof end fancy work give this building a lot of Mid Victorian grace and beauty.